



OASIS PARK



Oasis Park is an elegant Mediterranean development offering contemporary apartments and houses in beautifully landscaped grounds. Located in the heart of Kato Pafos, Oasis Park enjoys an exceptionally convenient location that places a wealth of amenities, attractions and experiences on your doorstep.

## *Contents*

02	the development
08	siteplan
10	location
12	plans
16	Pafilia





### *A park like feel...*

The architecture has a distinctly Cypriot feel due to elements such as natural stone, terracotta roofs and large private terraces and gardens, which are ideal for enjoying al fresco Mediterranean living!

Small blocks of semi-detached houses ensure a sense of openness while enabling extensive green buffers and pathways that give the development a park like feel. Additionally, this design style ensures that properties blend with the natural surroundings while providing residents with optimal natural light and views.







*A relaxing retreat....*

The properties encircle a 330sqm communal courtyard and gardens, complete with large residents swimming pool. It provides an oasis of calm to enjoy a refreshing dip or soak up some sun, while poolside changing facilities provide a little extra convenience. At Oasis Park, every aspect of home ownership can be hassle free, from interior design and year-round maintenance, to the simple convenience of grocery provisioning pre-arrival. In addition to property management services we'll also look after the care of your neighbourhood. The communal gardens and pool will always be kept in pristine condition, while pathways and roads will be kept tidy and well lit.





*Stylish living...*

The apartments, townhouses and penthouse all feature a contemporary high quality finish. Oversized windows have been chosen to blur the boundaries between inside and out, while ensuring abundant levels of natural light. Additionally, properties have a private underground parking space for residents convenience.



Site plan

The development enjoys a courtyard style layout ensuring all properties enjoy beautiful views of the large residents swimming pool. The architect has utilised the plots gentle gradient to ensure all apartments on the first to fourth floor enjoy beautiful sea views. What's more, almost all properties are south facing!



Key

	Pathway/steps		Communal area		Pavement
	Parking		Communal pool		Changing facilities
	Green area				
	Garden				
			House		
			Pergola/veranda		





### A superb location...

Oasis Park occupies one of the few remaining plots in this highly sought after residential neighbourhood of Kato Pafos. Situated opposite a small park, the development enjoys a relaxing air of tranquility, yet is just a few minutes' away from everything! The established area offers a wealth of activities, amenities and attractions that cater to all needs, and is also known for its high standards of healthcare and education, with a variety of first class clinics and institutes available to choose from. What's more, it's just moments away from Pafos' university and Cyprus' largest mall!

### Pafos



Pafos, the mythical birthplace of Aphrodite, the Greek goddess of love and beauty, is situated on the South-Western coast of Cyprus. It is home to a great extent of the island's rich cultural heritage including a medieval fortress, frescoed tombs and remarkable mosaics. Almost an open-air museum in itself, UNESCO added the entire town to its world heritage list. Although contemporary in its offering, Pafos is a city that is in touch with its heritage, offering an authentic, relaxed Mediterranean lifestyle. The cosmopolitan city offers a tantalizing selection of restaurants, cafes, boutiques and cultural activities. It also boasts numerous international schools and an excellent selection of healthcare facilities.

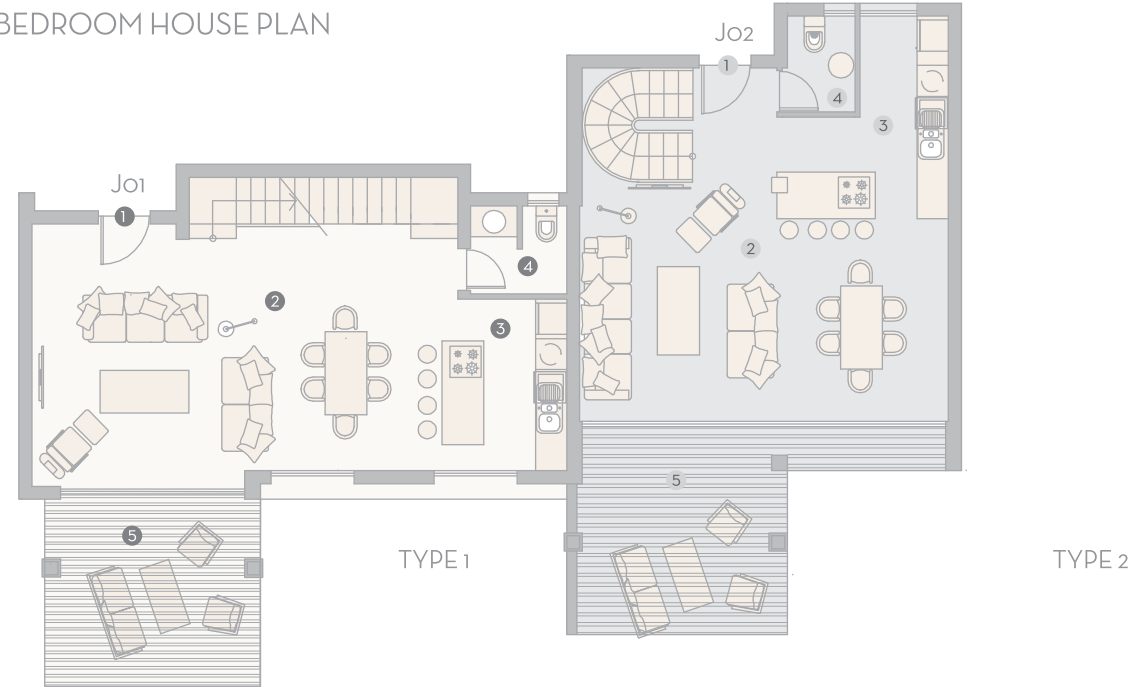
### Cyprus



With a total area of 9251km<sup>2</sup>, Cyprus is the third largest island in the Mediterranean. Cyprus enjoys a prime location, benefiting from a wide network of air-routes from both scheduled and low-cost airlines that connect it with Europe, Africa and Asia. This, combined with its ideal climate and excellent tax and financial benefits, make it a location of choice for many affluent business-minded individuals and companies. Numerous studies have also cited Cyprus as the number one place for retirement and relocation. Its popularity is due to its first-class infrastructure, relaxed lifestyle, beautiful landscape and safe environment.

- EU member
- Favourable tax regime
- Great climate
- Excellent education opportunities
- Low crime rate
- Strategic geographical position
- Financial & ship management centre
- Efficient legal, banking and accounting service
- Clean air

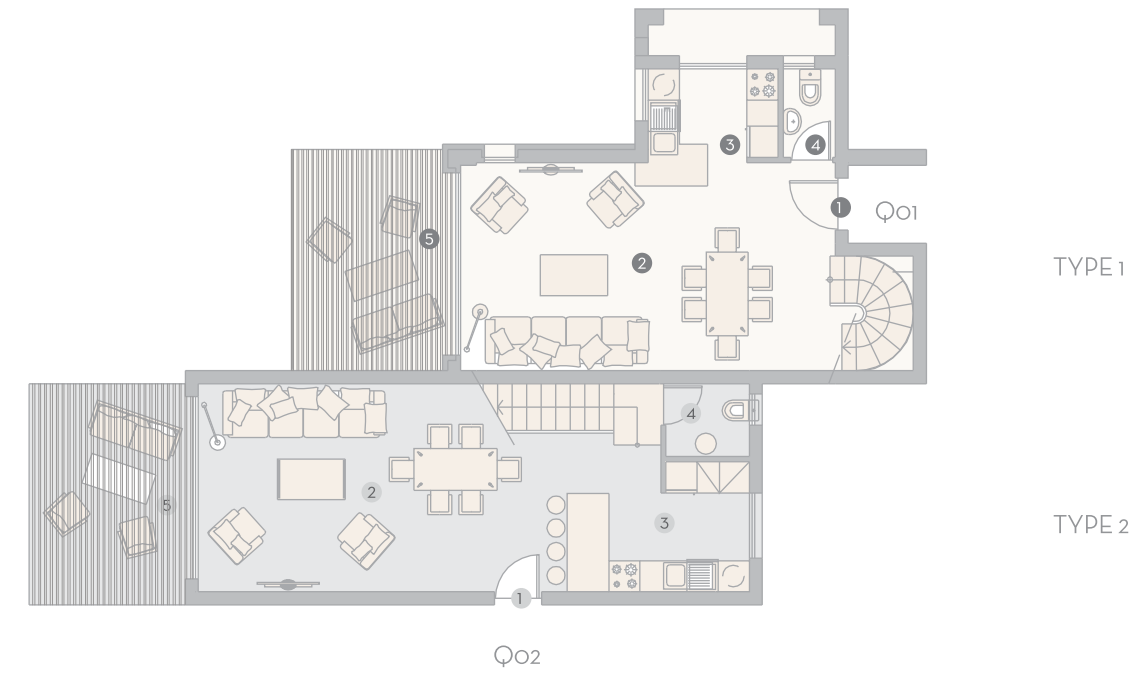
SAMPLE 3 BEDROOM HOUSE PLAN



GROUND FLOOR

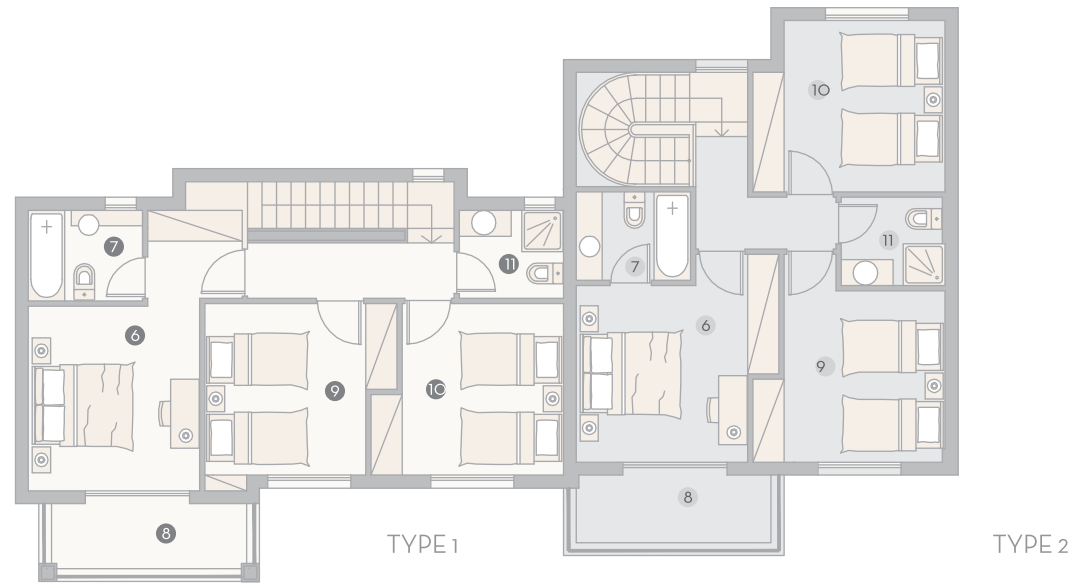
- Jo1**
- 1 entrance
  - 2 living/dining room 7.90x5.05
  - 3 kitchen 2.40/1.00x3.30
  - 4 wc 1.85x1.70
  - 5 veranda 4.15x3.60
- Jo2**
- 1 entrance
  - 2 living/dining room 7.10x4.60/3.90
  - 3 kitchen 1.70/3.30x3.90/1.95
  - 4 wc 1.30x1.85
  - 5 veranda 4.00x4.00/7.00x0.85

SAMPLE 2 BEDROOM HOUSE PLAN



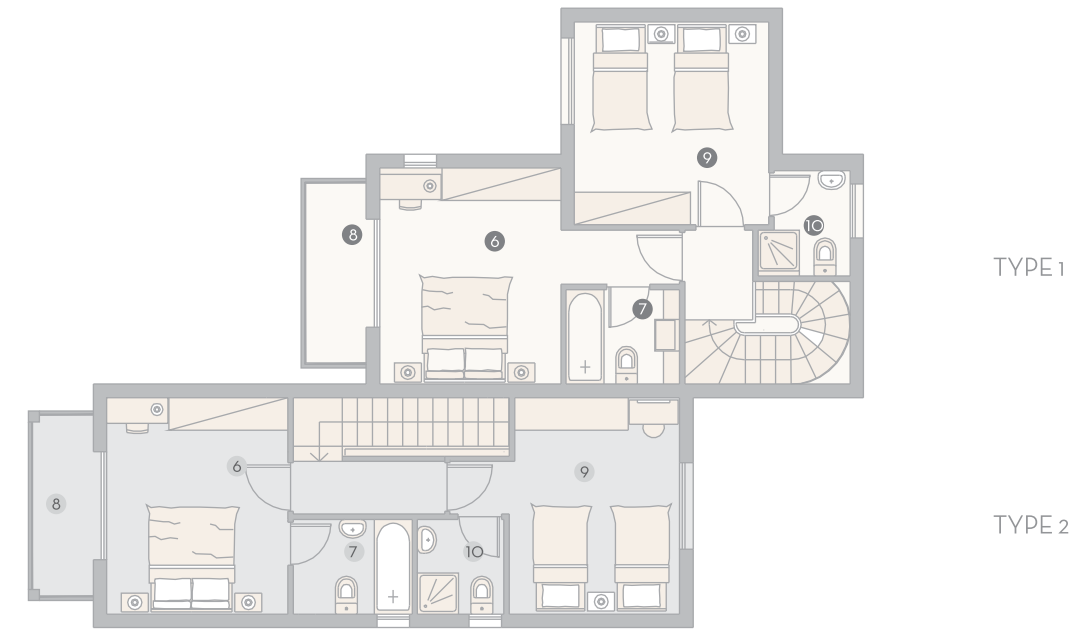
GROUND FLOOR

- Qo1**
- 1 entrance
  - 2 living/dining room 4.00x7.20
  - 3 kitchen 1.80x2.50
  - 4 wc 1.70x1.00
  - 5 veranda 4.15x3.00
- Qo2**
- 1 entrance
  - 2 living/dining room 4.00x7.10
  - 3 kitchen 2.70x1.30
  - 4 wc 1.60x1.40
  - 5 veranda 4.25x3.00



FIRST FLOOR

- Jo1**
- 6 bedroom 1, 3.30x3.35
  - 7 ensuite bathroom 2.20x1.75
  - 8 veranda 4.25x1.50
  - 9 bedroom 2, 3.10x3.30
  - 10 bedroom 3, 3.10x3.30
  - 11 bathroom 2.00x1.70
- Jo2**
- 6 bedroom 1, 3.30x3.40
  - 7 ensuite bathroom 2.20x1.70
  - 8 veranda 4.25x1.55
  - 9 bedroom 2, 3.10x3.30
  - 10 bedroom 3, 3.10x3.30
  - 11 bathroom 1.95x1.70

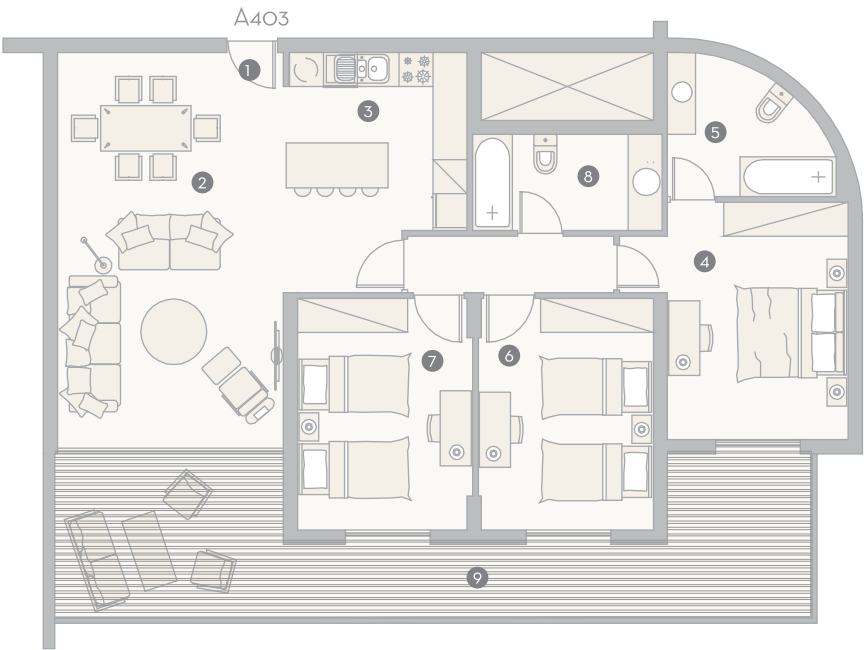


FIRST FLOOR

- Qo1**
- 6 bedroom 1, 3.40x3.35
  - 7 ensuite bathroom 1.75x2.10
  - 8 veranda 3.50x1.20
  - 9 bedroom 2, 3.15x3.60
  - 10 ensuite bathroom 1.95x1.40
- Qo2**
- 6 bedroom 1, 3.40x3.35
  - 7 ensuite bathroom 2.15x1.75
  - 8 veranda 3.50x1.20
  - 9 bedroom 2, 3.40x3.15
  - 10 ensuite bathroom 1.60x1.75



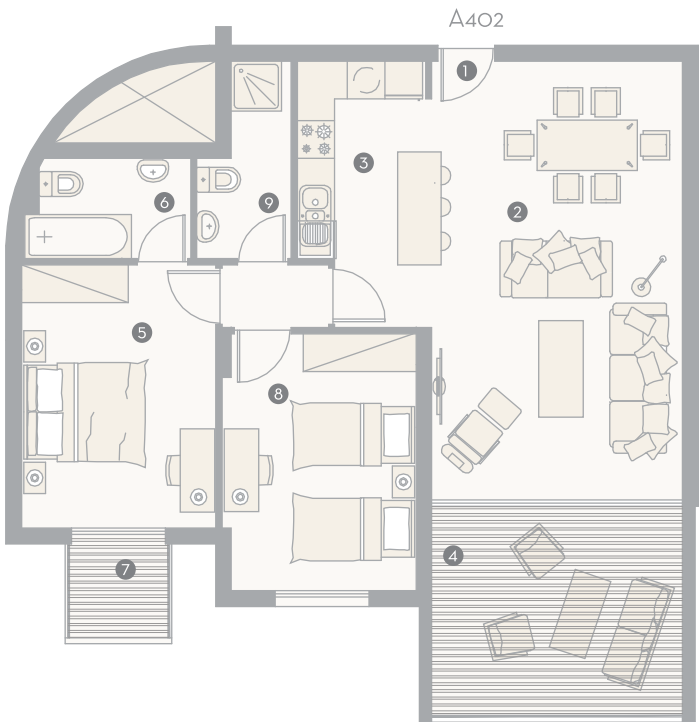
SAMPLE 3 BEDROOM APARTMENT PLAN



A403

- |                                |                                   |                           |
|--------------------------------|-----------------------------------|---------------------------|
| 1 entrance                     | 4 bedroom 1, 3.20x3.60            | 7 bedroom 3, 3.10x3.50    |
| 2 living/dining room 4.00x7.00 | 5 ensuite bathroom 2.55/2.05x2.40 | 8 bathroom 3.35x1.70      |
| 3 kitchen 3.15x3.15            | 6 bedroom 2, 3.10x3.50            | 9 veranda 13.50x3.00/1.40 |

SAMPLE 2 BEDROOM APARTMENT PLAN



A402

- |                                |                              |                                |
|--------------------------------|------------------------------|--------------------------------|
| 1 entrance                     | 4 veranda 4.00x3.45          | 7 veranda 1.70x1.60            |
| 2 living/dining room 4.00x7.00 | 5 bedroom 1, 3.10x3.60       | 8 bedroom 2, 3.10x3.50         |
| 3 kitchen 2.30x3.15            | 6 ensuite bathroom 2.65x1.60 | 9 bathroom 1.50/0.95x3.15/1.60 |





# Pafilia *a vision for the future*



Owner-managed by Mr. Elias Eliades and family, the Pafilia brand is synonymous with quality and has gained a reputation for excellence. Pafilia’s dynamic team, family values and customer centric approach are key attributes to the company’s success.

Integrity, commitment to excellence, market knowledge and wealth of experience earned Pafilia its place at the forefront of the property industry and gained it over 10,000 satisfied homeowners. The Pafilia promise is to provide value to its clients in terms of quality, design, service, support and investment returns. A full spectrum of services is on offer, including a property rentals division that enables homeowners to make their property work for them whilst away. In fact, Pafilia has taken customer service within the Cyprus property sector to new heights, through the creation of Pafilia Services, a subsidiary company wholly dedicated to catering to clients’ property and lifestyle requirements. With Pafilia, clients do not just purchase a hard asset, but an investment property that includes an exceptional lifestyle experience.

***Pafilia has an extensive portfolio of freehold properties for sale in both Greece and Cyprus, for which it has received twenty six international awards.***

2013 – European Property Awards (in association with Virgin Atlantic)  
**The Lighthouse Highly Commended Award for Best Development Cyprus**

2013 – European Property Awards (in association with Virgin Atlantic)  
**Minthis Hills Highly Commended Award for Architecture (Callisto Villa)**

2009 – Minthis Hills European Residential Property Awards (in association with CNBC)  
**Winner of the Best Golf Development Cyprus, 5 star**

2009 – Minthis Hills European Residential Property Awards (in association with CNBC)  
**Winner of the Best Architecture Cyprus, 5 star**

2009 – Minthis Hills European Residential Property Awards (in association with CNBC)  
**Winner of The Architecture Award Europe**

2009 – Pafilia Property Developers Bellevue Magazine  
**Winner of the Best Property Agents & Developers**

2008 – Pafilia Property Developers Bellevue Magazine  
**Awarded as Best Property Agents & Developers**

2008 – Pafilia Gardens Homes Overseas Magazine  
**Winner of the Gold Award for Best Development Cyprus**

2008 – Minthis Hills Homes Overseas Magazine  
**Winner of the Off-Plan Top 20**

2008 – Minthis Hills World Residence Awards  
**Winner of the Grand Prize Award (Russian)**

2008 – Panorama Villas World Residence Awards  
**Winner of the Silver Award for Best City Villa (Russian)**

2007 – Desire Gardens Homes Overseas Magazine  
**Winner of the Silver Award for Best Apartment Cyprus**

2007 – Nerina Sunset Homes Overseas Magazine  
**Winner of the Silver Award for Best House Cyprus**

2006 – Pafilia Property Developers International Homes Magazine  
**Awarded Memberships as Leading Cypriot Development**

2006 – Tala Gardens Homes Overseas Magazines  
**Winner of the Bronze Award for Best Cypriot Apartment**

2006 – Thalia Villa Homes Overseas Magazine  
**Winner of the Gold Award for Best Cypriot House / Villa**

2005 – Thalia Villa International Homes Magazine (sponsored by Bentley)  
**International Property Award for Best Cypriot Development**

2005 – Kissonerga Sea View Homes Overseas Magazines  
**Winner of the Silver Award for Best Cypriot Apartment**

2004/5 – Pafilia Property Developers International Homes Magazine  
**Awarded Memberships as Leading Cypriot Development**

2004 – Despina Villa International Homes Magazine  
**Winner of the Bronze Award for Best Cypriot Property**

2004 – Kissonerga Sea View International Homes Magazine (sponsored by Bentley)  
**International Property Award for Best Cypriot Development**

2004 – Pafilia Website  
**International Property Award for Best Developer Website**  
International Homes Magazine (sponsored by Bentley)

2003/4 – Pafilia Property Developers International Homes Magazine  
**Awarded Memberships as Leading Cypriot Development**

2002 – Aphrodite Villa International Homes Magazine (sponsored by Mercedes-Benz)  
**International Property Award for Best Cypriot Property**

2001 – Vastades Villas International Homes (sponsored by Mercedes-Benz)  
**International Property Award for Best Cypriot Property**

2001 – Nerina Sunset International Homes Magazine (sponsored by Mercedes-Benz)  
**International Property Award for Best Cypriot Property**

2000 – Epea Villas Peyia International Homes Magazine (sponsored by Jaguar)  
**International Property Gold Award for Best Cypriot Development**

1996 – Konia Villas International Property Magazine  
**International Property Award Best Cypriot Residential Development**

## For more information

[www.pafilia.com](http://www.pafilia.com)

[www.pafilia.ru](http://www.pafilia.ru)

[www.pafilia.cn.com](http://www.pafilia.cn.com)

## HEAD OFFICE

Pafilia House  
33 Nicodemou Mylona Street  
Marina Court  
PO Box 60159  
8101 Pafos – Cyprus  
Tel: +357 26 848 800  
Fax: +357 26 934 910  
Email: [info@pafilia.com](mailto:info@pafilia.com)

## MOSCOW

Pafilia Property Developers Ltd  
Krasnopresnenskaia  
Naberezhnaia 12  
Pod’ezd 6, Office 1032  
123610 Moscow, Russia  
Tel/Fax: +7 (495) 258 1970/71  
Email: [info.russia@pafilia.com](mailto:info.russia@pafilia.com)

## CHINA

2710-2714 Blue Castle  
International Center  
No.3 Xidawang Road  
Beijing CDB, China  
Tel: (+86) 1572 476 1031  
E-mail: [info@pafilia.cn.com](mailto:info@pafilia.cn.com)

The information in this brochure is for guidance only and does not constitute a contract and/or offer or any part thereof, or warranty. Images and descriptive representations may not necessarily be accurate in every respect. Dimensions are indicative and not intended for use for appliance sizes or items of furniture.  
© Copyright Pafilia Property Developers Ltd.





A **Pajila** Development